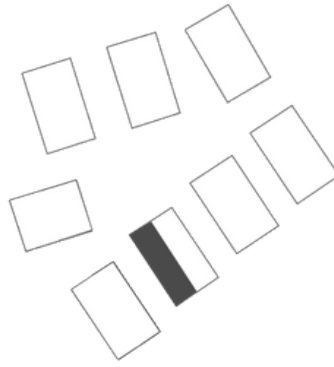


## A3.2 stanovanje



|                               |                    |
|-------------------------------|--------------------|
| 1. Predprostor 1              | 1.9m <sup>2</sup>  |
| 2. Stopnišče 1                | 6m <sup>2</sup>    |
| 3. Predprostor 2              | 7.6m <sup>2</sup>  |
| 4. Soba 1                     | 11.5m <sup>2</sup> |
| 5. Kopalnica 1                | 5m <sup>2</sup>    |
| 6. Utility                    | 4m <sup>2</sup>    |
| 7. Soba 2                     | 12.8m <sup>2</sup> |
| 8. Stopnišče 2 in predprostor | 10.3m <sup>2</sup> |
| 9. Spalnica                   | 11.9m <sup>2</sup> |
| 10. Kopalnica 2               | 2.5m <sup>2</sup>  |
| 11. Bivalni prostor s kuhinjo | 34.5m <sup>2</sup> |
| 12. WC                        | 1.9m <sup>2</sup>  |

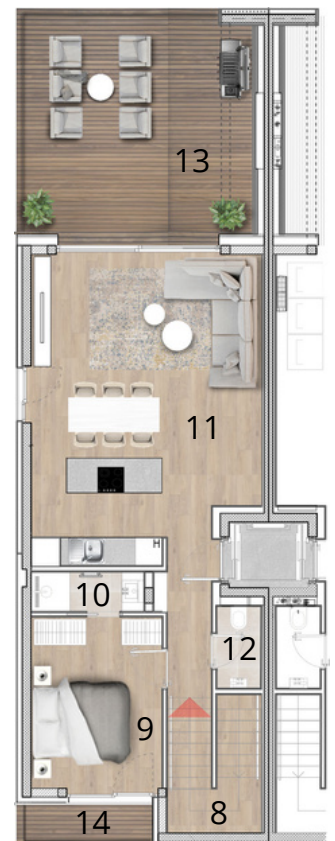
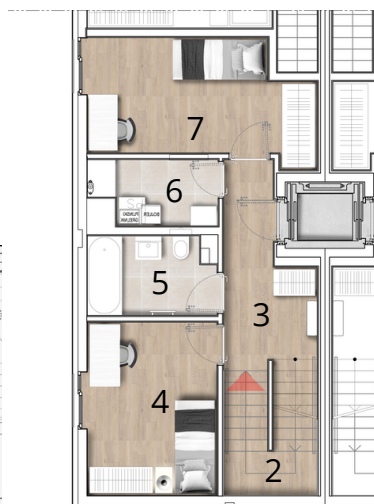
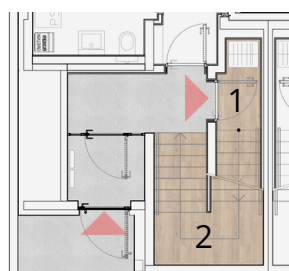
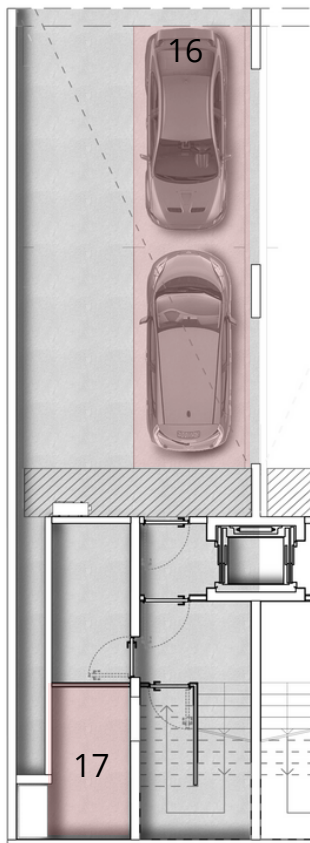


-----  
Notranji prostori: 109.9m<sup>2</sup>

|              |                    |
|--------------|--------------------|
| 13. Terasa 1 | 28.3m <sup>2</sup> |
| 14. Terasa 2 | 3.4m <sup>2</sup>  |

|                             |                   |
|-----------------------------|-------------------|
| 15. Parkirna mesta v garaži | 2                 |
| 16. Shramba v kleti         | 9.6m <sup>2</sup> |

-----  
Skupna površina: 151.2m<sup>2</sup>



**OPOMBA:** Vsa stanovanjska oprema je vrisana informativno. Investitor si pridržuje pravico do sprememb, ki ne vplivajo na funkcionalnost stanovanj.