

B1.2 stanovanje

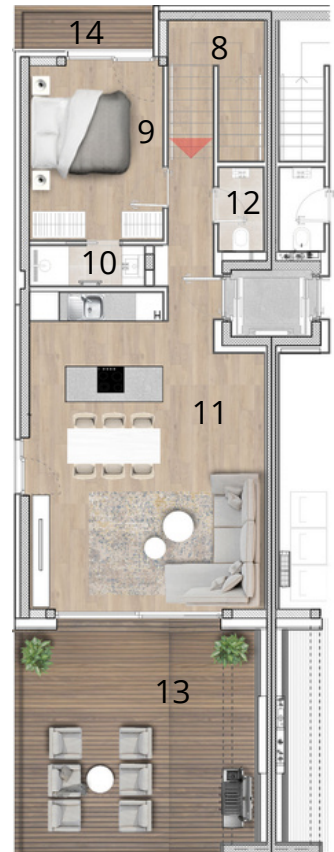
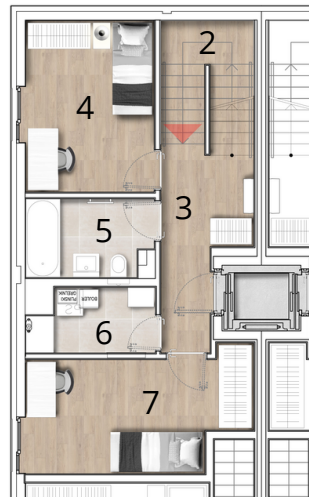
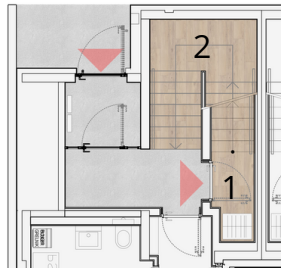
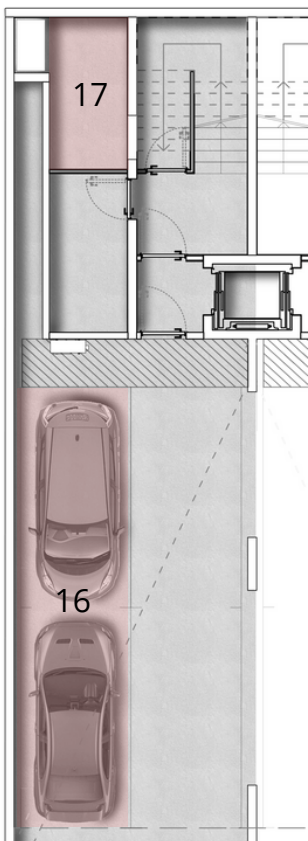
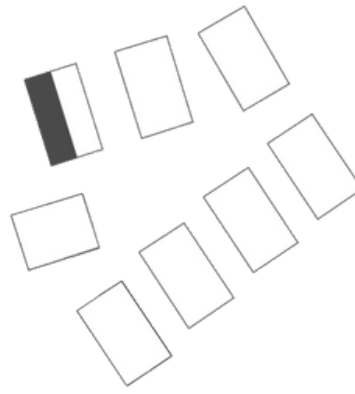
1. Predprostor 1	1.9m ²
2. Stopnišče 1	6m ²
3. Predprostor 2	7.6m ²
4. Soba 1	11.5m ²
5. Kopalnica 1	5m ²
6. Utility	4m ²
7. Soba 2	12.8m ²
8. Stopnišče 2 in predprostor	10.3m ²
9. Spalnica	11.9m ²
10. Kopalnica 2	2.5m ²
11. Bivalni prostor s kuhinjo	34.5m ²
12. WC	1.9m ²

Notranji prostori: 109.9m²

13. Terasa 1	28.3m ²
14. Terasa 2	3.4m ²

15. Parkirna mesta v garaži	2
16. Shramba v kleti	9.6m ²

Skupna površina: 151.2m²



OPOMBA: Vsa stanovanjska oprema je vrisana informativno. Investitor si pridržuje pravico do sprememb, ki ne vplivajo na funkcionalnost stanovanj.