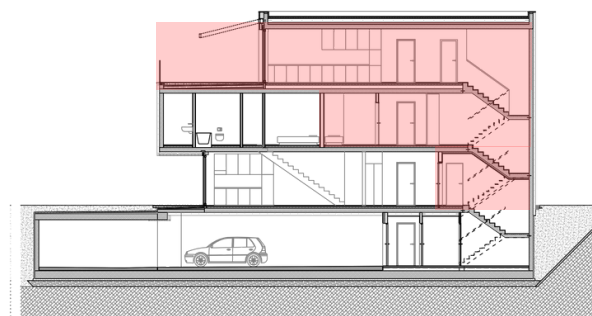
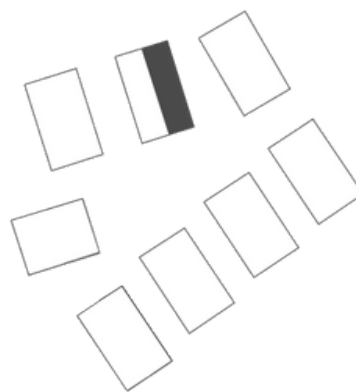


B4.2 stanovanje



1. Predprostor 1	1.9m ²
2. Stopnišče 1	6m ²
3. Predprostor 2	7.6m ²
4. Soba 1	11.5m ²
5. Kopalnica 1	5m ²
6. Utility	4m ²
7. Soba 2	12.8m ²
8. Stopnišče 2 in predprostor	10.3m ²
9. Spalnica	11.9m ²
10. Kopalnica 2	2.5m ²
11. Bivalni prostor s kuhinjo	34.5m ²
12. WC	1.9m ²

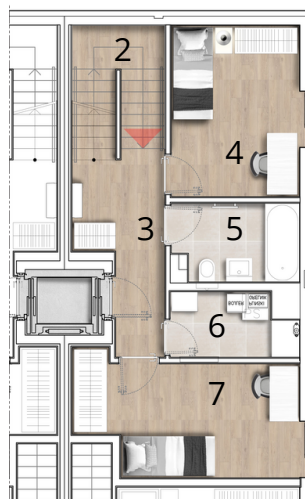
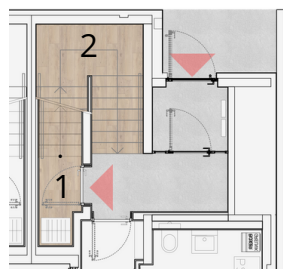
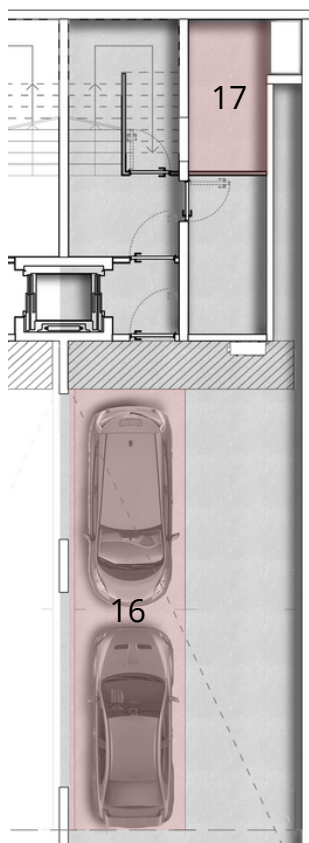


 Notranji prostori: 109.9m²

13. Terasa 1 28.3m²
 14. Terasa 2 3.4m²

15. Parkirna mesta v garaži 2
 16. Shramba v kleti 9.6m²

 Skupna površina: 151.2m²



OPOMBA: Vsa stanovanjska oprema je vrisana informativno. Investitor si pridržuje pravico do sprememb, ki ne vplivajo na funkcionalnost stanovanj.