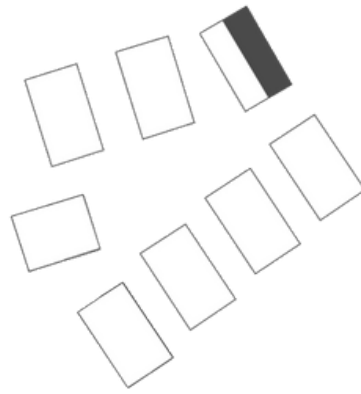


B6.2 stanovanje

| | |
|-------------------------------|--------------------|
| 1. Predprostor 1 | 1.9m ² |
| 2. Stopnišče 1 | 6m ² |
| 3. Predprostor 2 | 7.6m ² |
| 4. Soba 1 | 11.5m ² |
| 5. Kopalnica 1 | 5m ² |
| 6. Utility | 4m ² |
| 7. Soba 2 | 12.8m ² |
| 8. Stopnišče 2 in predprostor | 10.3m ² |
| 9. Spalnica | 11.9m ² |
| 10. Kopalnica 2 | 2.5m ² |
| 11. Bivalni prostor s kuhinjo | 34.5m ² |
| 12. WC | 1.9m ² |

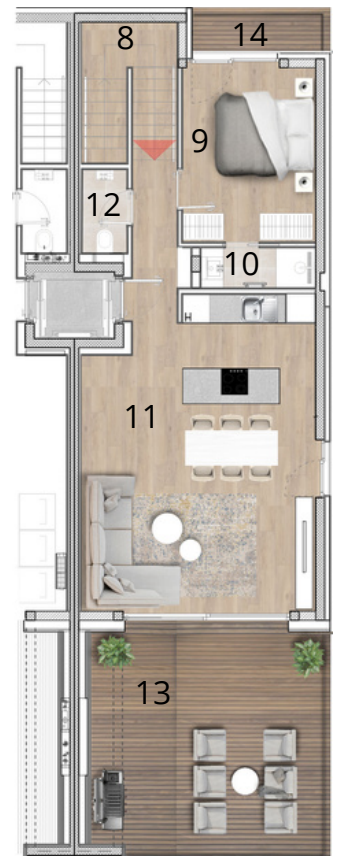
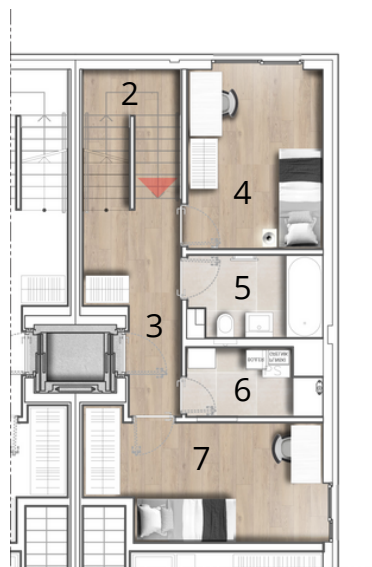
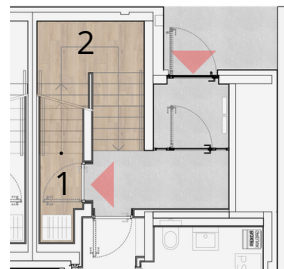
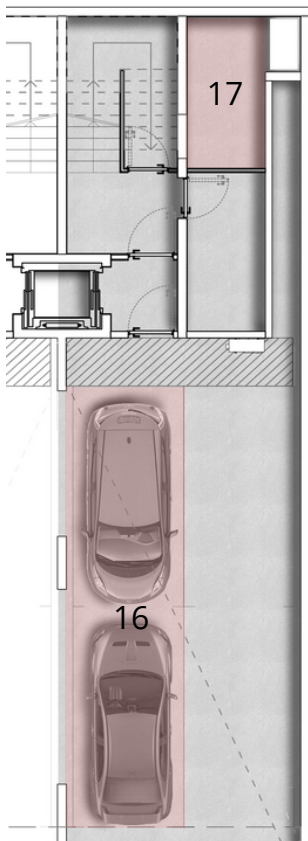


Notranji prostori: 109.9m²

13. Terasa 1 28.3m²
14. Terasa 2 3.4m²

15. Parkirna mesta v garaži 2
16. Shramba v kleti 9.6m²

Skupna površina: 151.2m²



OPOMBA: Vsa stanovanjska oprema je vrisana informativno. Investitor si pridržuje pravico do sprememb, ki ne vplivajo na funkcionalnost stanovanj.